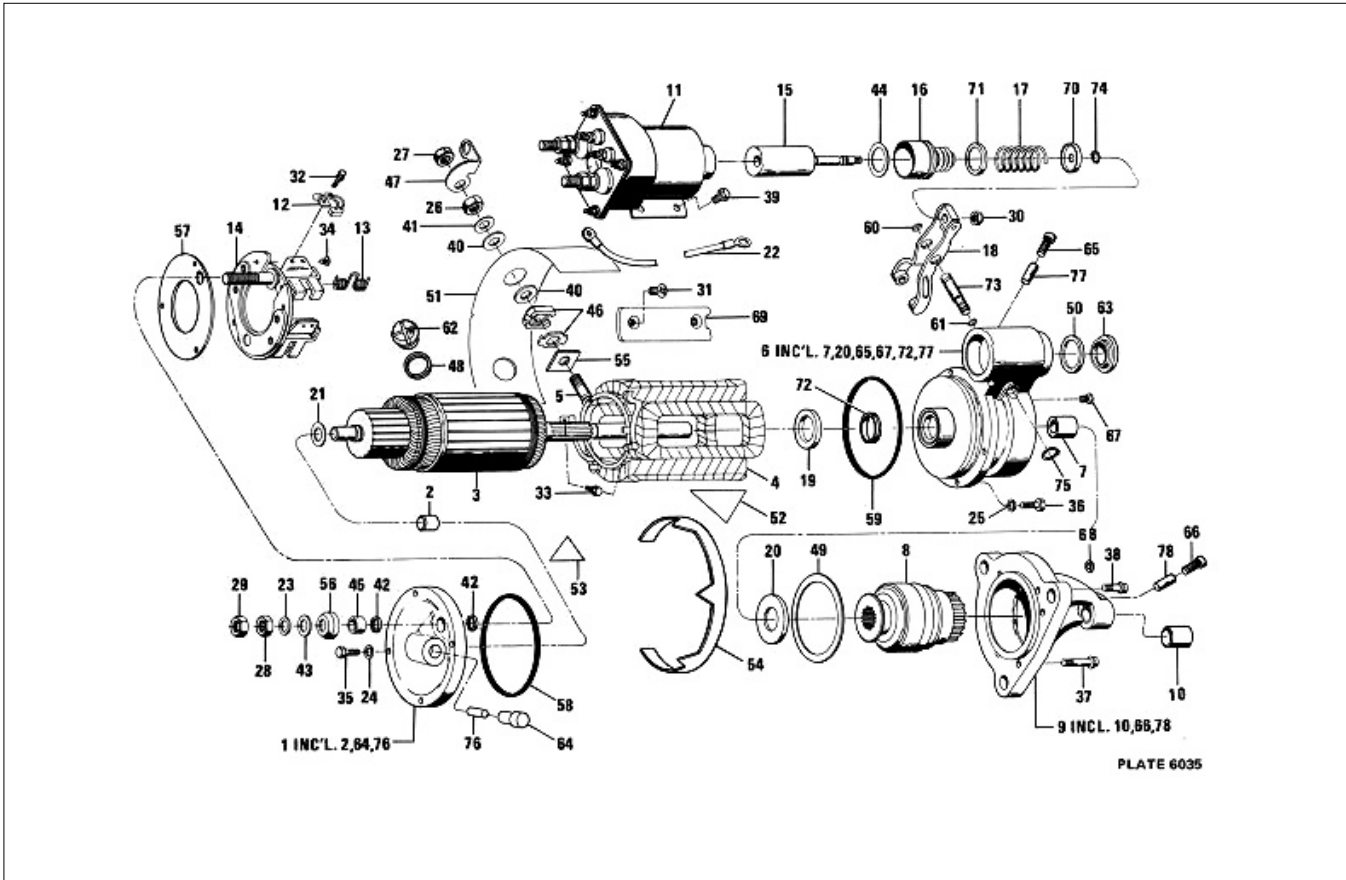
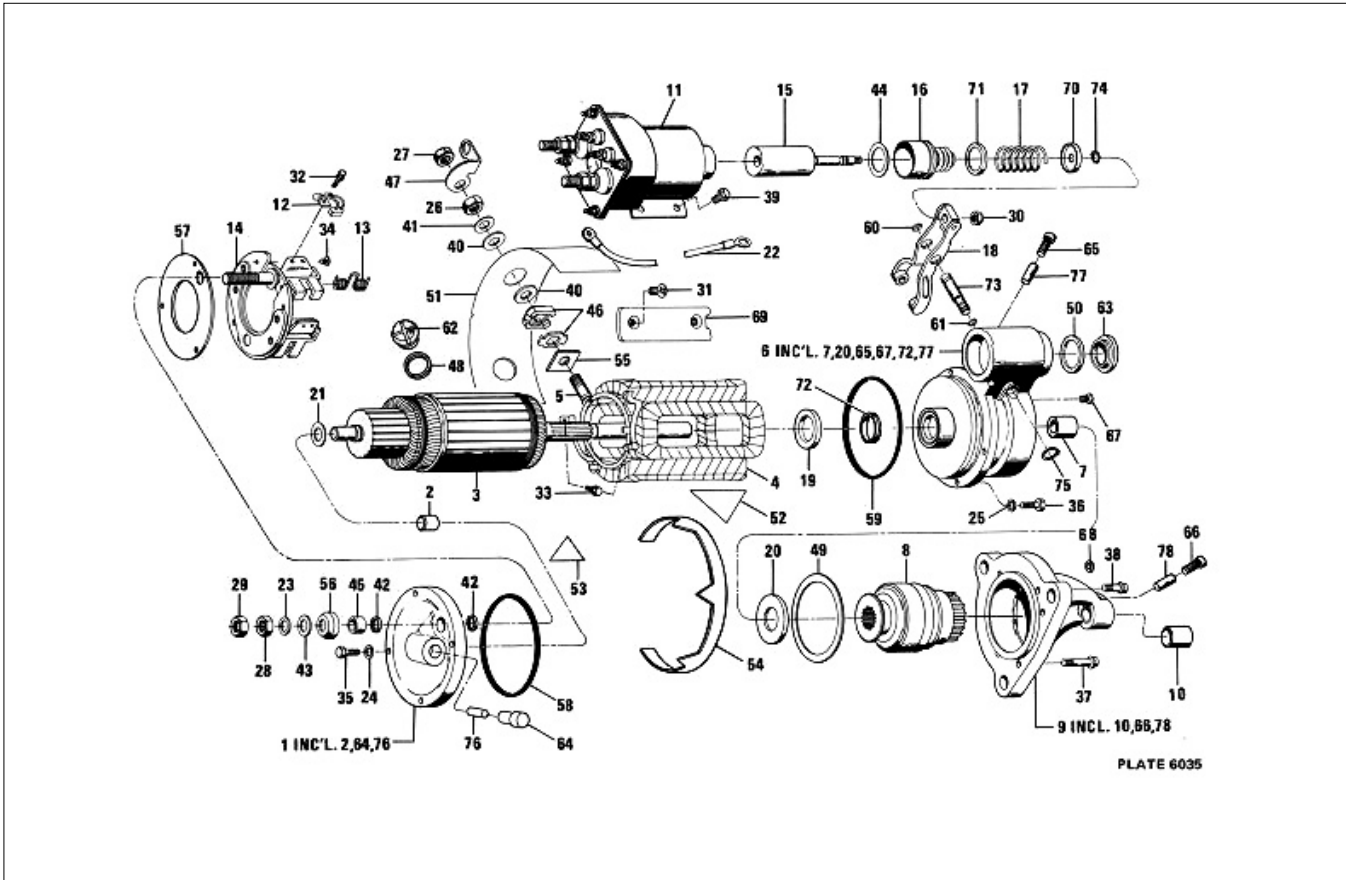


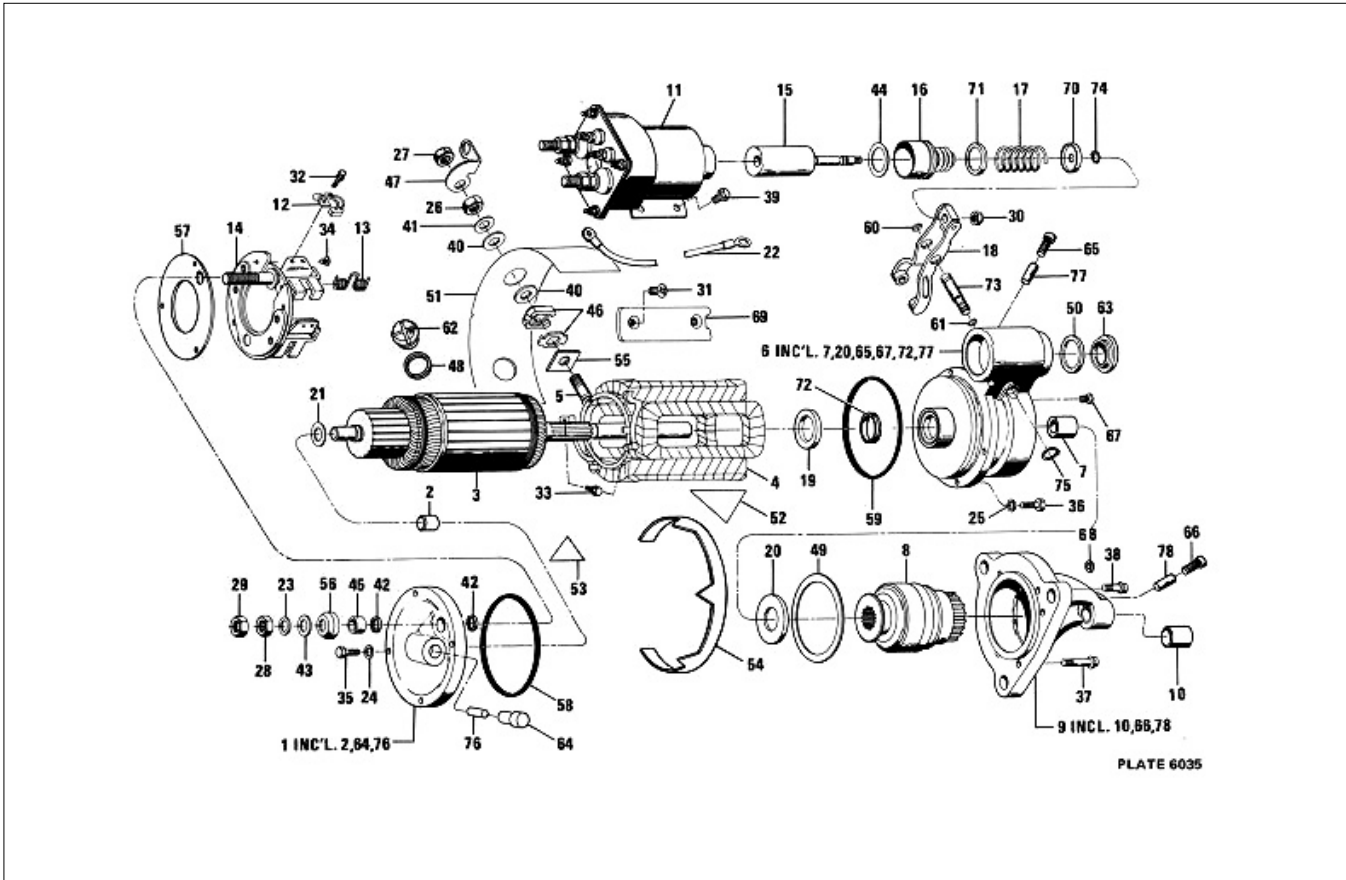
Ref No	Description	Part Number	Notation	Qty Reqd
00	NUT ASSY	1979365		
00	CLAMP-BOOT	801078		
01	FRAME-CE	1945848		
02	BUSHING	1894638		
03	ARMATURE ASSY	1945840		
04	FIELD COIL ASSY	1945853		
06	LEVER HOUSING ASSY	10475532		
07	BUSHING	1894637		
08	DRIVE ASSY	1893560	SERVICE BY COMPLETE REPLACEMENT.	
09	FIELD COIL ASSY	1988328		
10	BUSHING/DRIVE HOUSING	1984635		
11	SOLENOID	1115559		
12	BRUSH	1852888		
13	BRUSH HOLDER & SPRING ASSY	1984979		
14	BRUSH PLATE ASSY	1984974		
15	PLUNGER ASSY	1948522		
16	BOOT	801077		
17	SPRING	1948521		
18	SHIFT LEVER ASSY	1945484		
19	SPACER	1936466		
20	WASHER	1911644		
21	WASHER	1953237		
22	LEAD ASSY	10497105		



Ref No	Description	Part Number	Notation	Qty Reqd
23	LOCK WASHER-TERM. STUD-C.E. (3/4 HE	9421427		
26	NUT-TERM. STUD (5/16 THK.)	9441934		
27	NUT	1979451		
28	NUT-C.E. TERM. STUD (3/4 HEX x 5/16	9441934		
29	NUT	1979451		
30	NUT	9412305		
31	SCREW	10499632		
32	SCREW	1968998		
33	SCREW	1968998		
34	SCREW ASSY	1847807		
35	BOLT	10499639		
36	BOLT	10499639		
37	SCREW	10475536		
38	SCREW	10499643		
39	SCREW	10475535		
40	WASHER	1922457		
41	WASHER	1914647		
42	WASHER	1861791		
43	WASHER	1914647		
44	WASHER	1948519		
45	BUSHING-INSUL-C.E. TERM. STUD	-	FOR SERVICE USE 1851632 TERMINAL INSULATOR PKG.	
46	SERV PKG, INSULATOR	1965472		
47	CONNECTOR	1945862		



Ref No	Description	Part Number	Notation	Qty Reqd
48	GASKET	1964857		
49	O RING	1851960		
50	GASKET	1964857		
51	INSULATOR	1955989		
52	INSULATOR	1914873		
56	INSULATOR-TERM. STUD-C.E.	-	FOR SERVICE USE 1851632 TERMINAL INSULATOR PKG.	
57	INSULATOR-BRUSH PLATE	1964516		
58	O RING	1945860		
59	O RING	1945860		
60	O RING	1894643		
61	O RING	1894642		
62	PLUG	1945356		
63	PLUG	1945356		
64	CUP	1978756		
65	CUP	1978756		
66	CUP	1978756		
67	PLUG	1949619		
69	SHOE-POLE	1869747		
70	RETAINER-SPRING	1948526		
71	RETAINER-SPRING	1948520		
72	SEAL-OIL	1918047		
73	SHAFT-LEVER	1948529		
74	RING	9416374		



Ref No	Description	Part Number	Notation	Qty Reqd
75	RING	9416374		
76	WICK	1972977		
77	WICK	1978754		
78	WICK	1978754		